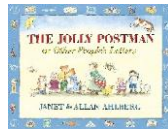


Hello Year 2! ☺



English

This week: We started to read our new story of Cinderella and created our on word banks to use later on.

Next Week: We will be focusing on retelling the story of Cinderella, using exciting vocabulary and adjectives.

Scan the QR code for online grammar support.

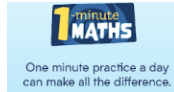


Mathematics

This week: We focused on recognising money and making totals.

Next Week: We will be continuing with money and looking at finding change.

Online Learning: Please use to reinforce number facts.
Please download the app



Foundation Subjects

Science- Sorting animals using different criterion.

ICT - Technology around us.

PSHE- Making good choices.

Geography - Knowing where we live.

RE - Looking at the celebration of Vaisakhi.

PE days: Please check with your class teacher

Children to come into school wearing their P.E. kits - tracksuit bottoms or shorts, PE shirt, school jumper and trainers. No jewellery, especially earrings please!



Question of the week

What is your favourite celebration and why is it your favourite?



Important Notices

Children In Need- On Friday 15th we celebrated Children In Need and thank you for supporting this by wearing yellow and for all the generous donations. We raised £

Forest School - Diamond Class will be starting Forest School this half term - please ensure you have sent in your child's wellington boots into school.

PE - Year 2 will be having PE with Mr Watson every Wednesday, can you please ensure your child comes in their PE kit. No tights for girls on that day please! This will be in addition to their normal PE day.

GENERAL NOTICES

- **Doodle** - This is a new programme for homework that focuses on Maths and English. Please encourage your child to spend ten minutes daily to complete the tasks.
- **Cooking Money** - Please could we ask to **donate £1** towards purchasing ingredients for your child's cooking.
- **Phone-free zone** - Yeading Infant School is a phone-free zone. Please ensure phones are put away while collecting your child.
- **Nut allergies** - Just another reminder that we do not allow any nuts on school grounds including food that 'may contain nuts'.
- **Park and stride** - Please park away from school near the church or park when dropping off your child and walk into school.
- **Reading** - Please read with your child daily, write a comment in the yellow home/school diary and ensure that his/her book bag is brought in daily.
- **Tissues** - Please could you send in a box of tissue and wet wipes. Your donations will be greatly appreciated

Have a great weekend!
Year 2 Team ☺



